



# Troubleshooting Guide

## - mechanical -



**Xperia™ arc S**  
**LT18i, LT18a**



## CONTENTS

<b>1</b>	<b>Problem Areas .....</b>	<b>4</b>
1.1	Power .....	4
1.1.1	Will not power on or will switch off randomly.....	4
1.2	Keys .....	5
1.2.1	Menu, Home and Back Keys.....	5
1.2.2	Camera Key.....	7
1.2.3	Volume Key .....	8
1.2.4	On/Off key .....	9
1.3	Touch Screen .....	11
1.3.1	Touch Screen malfunction.....	11
1.4	Display .....	12
1.4.1	Graphics & Illumination .....	12
1.5	LED/Illumination.....	13
1.5.1	LED/Illumination .....	13
1.5.2	Key Illumination.....	13
1.6	Speaker .....	16
1.6.1	Loudspeaker .....	16
1.7	Earphone .....	19
1.7.1	Earphone.....	19
1.8	Microphone.....	21
1.8.1	Microphone .....	21
1.8.2	Secondary Microphone .....	23
1.9	Vibrator .....	24
1.9.1	Vibrator not generating alerts .....	24
1.10	Camera.....	25
1.10.1	Camera defects.....	25
1.11	Flash LED .....	26
1.11.1	Flash LED not flashing.....	26
1.12	Bluetooth and WLAN .....	27
1.12.1	Bluetooth or WLAN connection failure.....	27
1.13	GPS .....	28
1.13.1	GPS malfunctions.....	28
1.14	Compass.....	29
1.14.1	Compass fails .....	29
1.15	Accelerometer .....	30
1.15.1	Accelerometer test fails .....	30
1.16	Ambient Light Sensor .....	31
1.16.1	Light Sensor malfunctions .....	31
1.17	Proximity switch.....	33
1.17.1	Proximity switch malfunctions.....	33
1.18	Real Time Clock .....	35
1.18.1	Real Time Clock test fails .....	35



<b>1.19 Total call time .....</b>	<b>36</b>
1.19.1 Total call time fails .....	36
<b>1.20 External Memory Card .....</b>	<b>37</b>
1.20.1 Memory Card not detected .....	37
<b>1.21 Security.....</b>	<b>38</b>
1.21.1 Security fails .....	38
<b>1.22 FM Radio .....</b>	<b>39</b>
1.22.1 No/Poor FM Radio reception .....	39
<b>1.23 Battery test .....</b>	<b>41</b>
1.23.1 Battery test fails.....	41
<b>1.24 Verify Certificates.....</b>	<b>42</b>
1.24.1 Verify certificates fails.....	42
<b>1.25 HDMI Test .....</b>	<b>43</b>
1.25.1 HDMI test fails.....	43
<b>1.26 Network &amp; Signal.....</b>	<b>44</b>
1.26.1 No/Poor signal .....	44
<b>1.27 SIM .....</b>	<b>46</b>
1.27.1 SIM not detected.....	46
1.27.2 Incorrect SIM indicated .....	46
<b>1.28 Charging .....</b>	<b>47</b>
1.28.1 Battery will not charge .....	47
<b>1.29 HandsFree by Wire.....</b>	<b>48</b>
1.29.1 Connection to Portable HandsFree fails.....	48
<b>1.30 Data Communication .....</b>	<b>50</b>
1.30.1 Data transfer via System Connector fails.....	50
<b>2 Revision History .....</b>	<b>51</b>



# 1 Problem Areas

## 1.1 Power

### 1.1.1 Will not power on or will switch off randomly

**Check:**

Check whether the phone vibrates and the Keyboard illuminates after the Key On/Off is depressed.

**Action:**

If activation of the Vibrator is detected, refer to section 1.4 'Display'.



**Check:**

Inspect the contact pads on the Battery.

**Action:**

1. If dirty or oxidized – clean the pads.
2. If damaged – replace the Battery.



**Check:**

Inspect the Battery Contact pins.

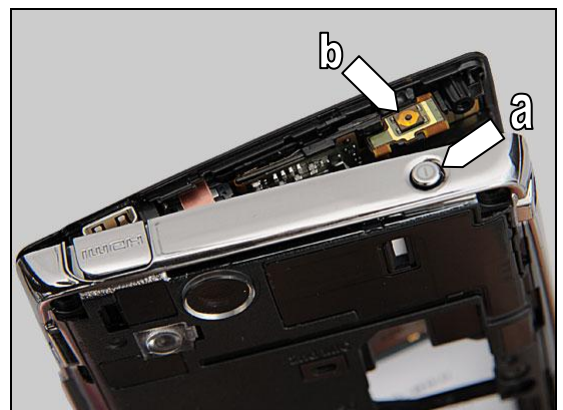
**Action:**

1. If dirty or oxidized – clean the contact pins.
2. If adhesive is detected on the contact pins, use an eraser to gently rub off the adhesive.



**Check:**

Inspect the Key On/Off, refer to section 1.2.4 'On/Off key'.



## Problem Areas

### 1.2 Keys

#### 1.2.1 Menu, Home and Back Keys

**Check:**

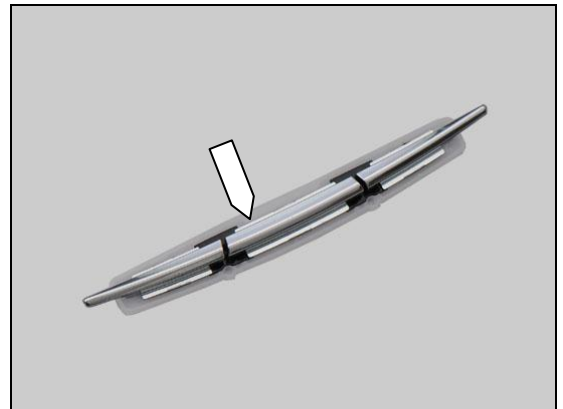
Inspect the menu, home and back keys in the Cover Front.

**Action:**

1. If the menu, home and back keys are clogged – clean them.

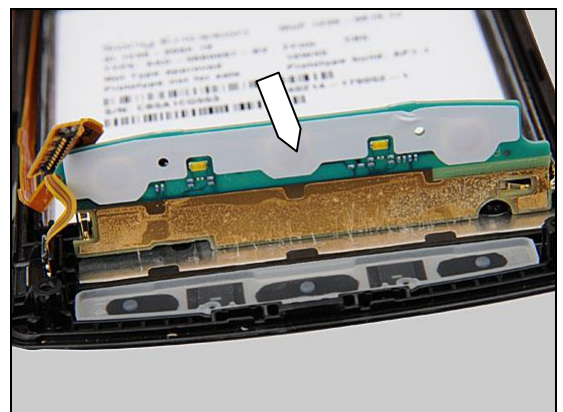


2. If menu, home and back keys are damaged – replace the Key Main.



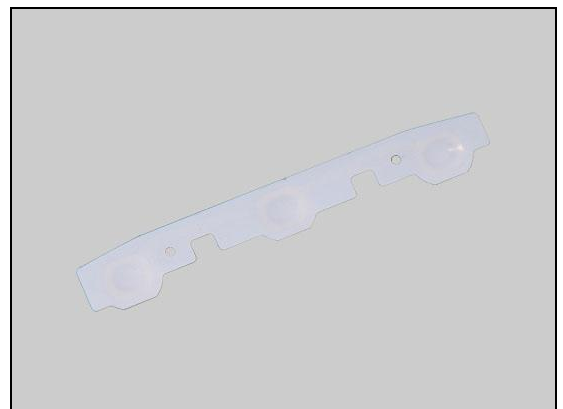
**Check:**

Inspect the Input Switch Push on the Sub PBA.



**Action:**

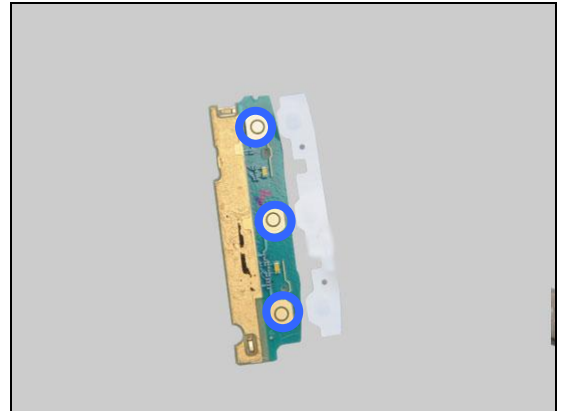
If the Input Switch Push is damaged – replace the Input Switch Push.



## Problem Areas: Keys

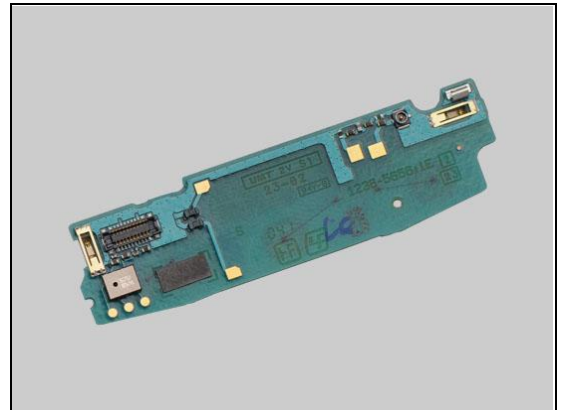
### Check:

Inspect the key switch on Sub PBA.



### Action:

1. If dirty or oxidized – clean them.
2. If the key switch is damaged – replace the Sub PBA.



### Check:

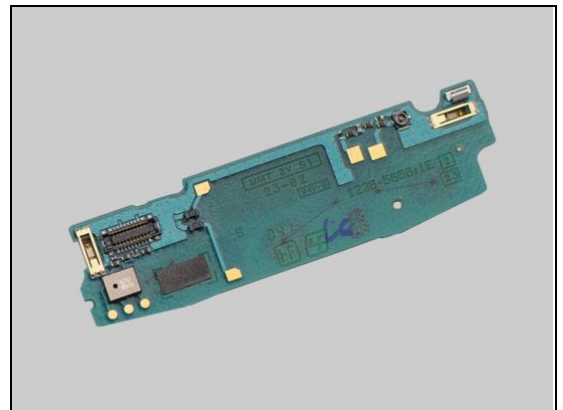
Inspect the BtB connector of the Sub PBA to the Key Flex PBA.

### Action:

1. If not properly connected – disconnect and reconnect
2. If dirty or oxidized – clean both sides of the BtB connector.



3. If the connector is damaged – replace the Sub PBA.





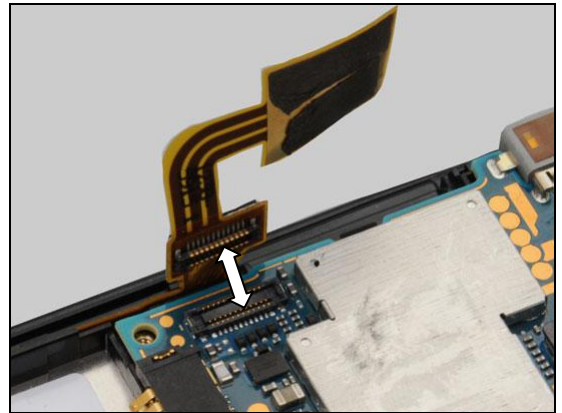
## Problem Areas: Keys

### Check:

Check the BtB connector of the Key Flex PBA to the Main PBA.

### Action:

1. If not properly connected – disconnect and reconnect
2. If dirty or oxidized – clean both sides of the BtB connector.

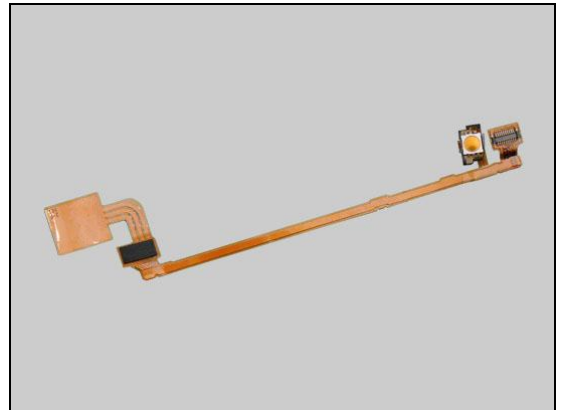


### Check:

Inspect the Key Flex PBA.

### Action:

1. If the Key Flex PBA or its BtB connector is damaged – replace the Key Flex PBA.
2. Send to higher level of repair.



## 1.2.2 Camera Key

### Check:

Inspect the Key Camera on the Cover Rear Sub Assembly.



### Action:

If the Key Camera is damaged – replace the Key Camera.







## Problem Areas: Keys

### Check:

Inspect the key switch on the Key Flex PBA.

### Action:

1. If dirty or oxidized – clean it.
2. If the Key Flex PBA or its key switch is damaged – replace the Key Flex PBA.

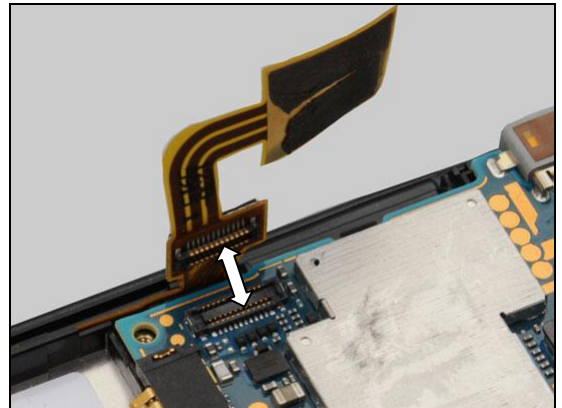


### Check:

Check the BtB connector of the Key Flex PBA to the Main PBA.

### Action:

1. If not properly connected – disconnect and reconnect
2. If dirty or oxidized – clean both sides of the BtB connector.

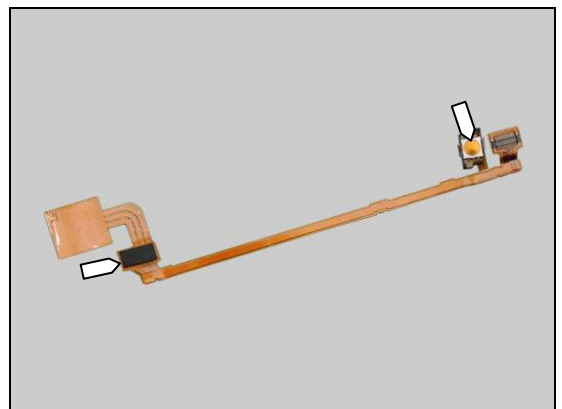


### Check:

Inspect the Key Flex PBA.

### Action:

1. If the Key Flex PBA or its BtB connector is damaged – replace the Key Flex PBA.
2. Send to higher level of repair.



## 1.2.3 Volume Key

### Check:

Inspect the Key Volume on Cover Rear Sub Assembly.







## Problem Areas: Keys

### Action:

1. If the key Volume is damaged – replace the Key Volume.
2. Send to higher level of repair.



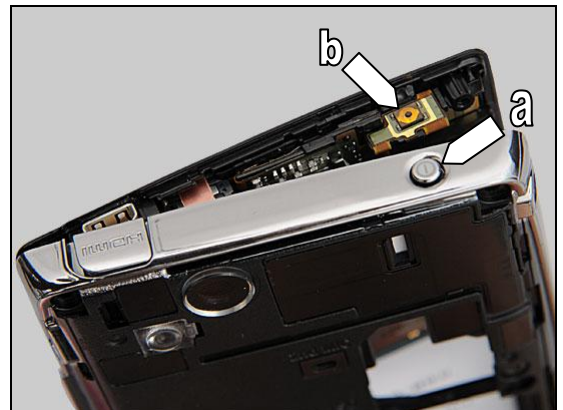
### 1.2.4 On/Off key

#### Check:

Inspect the Key On/Off (a) on the Cover Rear Sub Assembly and the input switch (b) on the RCV Flex PBA.

#### Action:

1. If (a) or (b) is dirty or clogged – clean them.



2. If (a) is damaged – replace the Key On/Off.

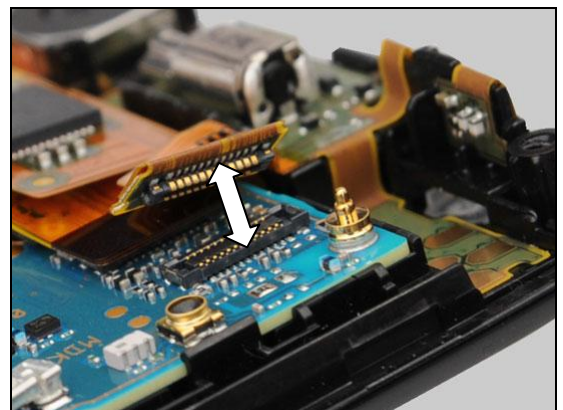


#### Check:

Inspect the BtB connector of the RCV Flex PBA to the Main PBA.

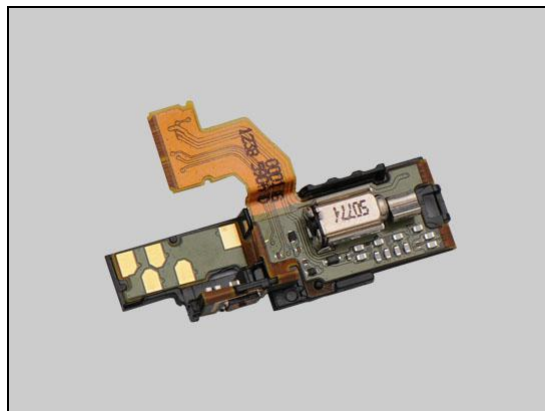
#### Action:

1. If not properly connected – disconnect and reconnect
2. If dirty or oxidized – clean both sides of the BtB connector.



## Problem Areas: Keys

3. If the RCV Flex PBA or its BtB connector is damaged – replace the RCV Flex PBA.
4. Send to higher level of repair.



## Problem Areas

### 1.3 Touch Screen

#### 1.3.1 Touch Screen malfunction

**Check:**

Inspect the Display 4.2 TFT of the Cover Front.

**Action:**

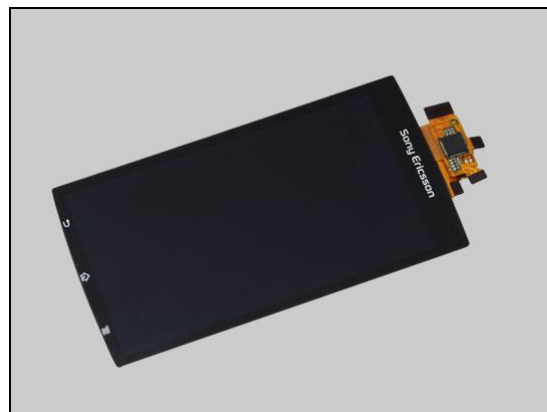
1. If dirty – clean it.



2. If the Display 4.2 TFT is damaged – replace the Display 4.2 TFT.

**If tearing in camera view finder after reassembly, please perform Main Display V-Sync Calibration;**

**1269-2060 Trouble Shooting Application-mechanical.**



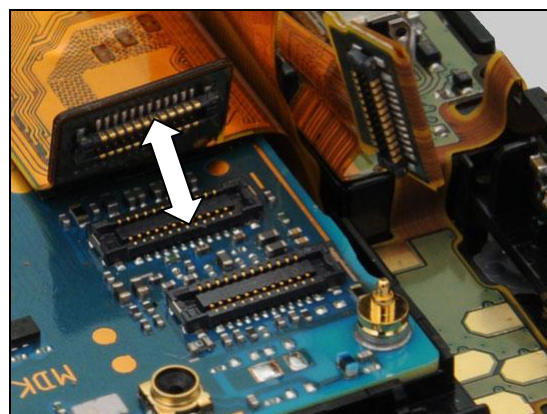
**Check:**

Inspect the BtB connector of the Display 4.2 TFT to the Main PBA.

**Action:**

1. If not properly connected – disconnect and reconnect

2. If dirty or oxidized – clean both sides of the BtB connector.

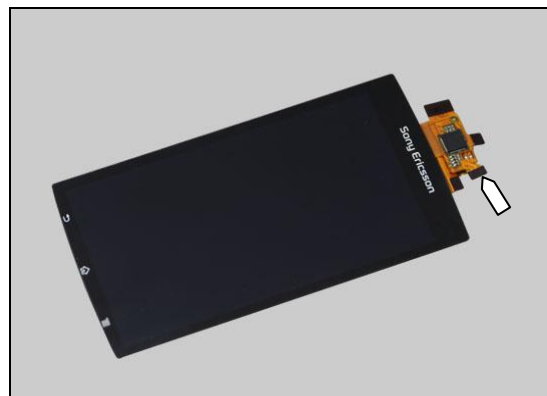


3. If the Display 4.2 TFT FPC or its BtB connector is damaged – replace the Display 4.2 TFT.

**If tearing in camera view finder after reassembly, please perform Main Display V-Sync Calibration;**

**1269-2060 Trouble Shooting Application-mechanical.**

4. Send to higher level of repair.





## Problem Areas

### 1.4 Display

#### 1.4.1 Graphics & Illumination

**Check:**

Check whether the phone vibrates after the Key On/Off key has been pressed.

**Action:**

If the activation described above is not detected, refer to section 1.1 'Power'.

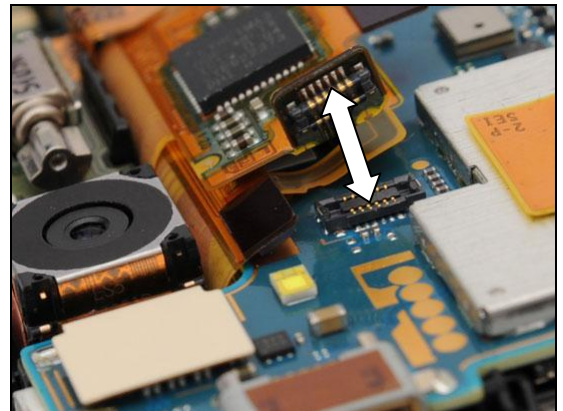


**Check:**

Inspect the BtB connector of the Display 4.2 TFT to the Main PBA.

**Action:**

1. If not properly connected – disconnect and reconnect
2. If dirty or oxidized – clean both sides of the BtB connector.



**Check:**

Inspect the Display 4.2 TFT.

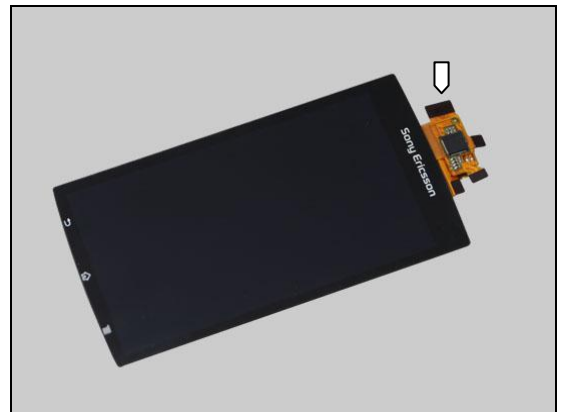
**Action:**

1. If damaged – replace the Display 4.2 TFT.

**If tearing in camera view finder after reassembly, please perform Main Display V-Sync Calibration;**

**1269-2060 Trouble Shooting Application-mechanical.**

2. Send to higher level of repair.



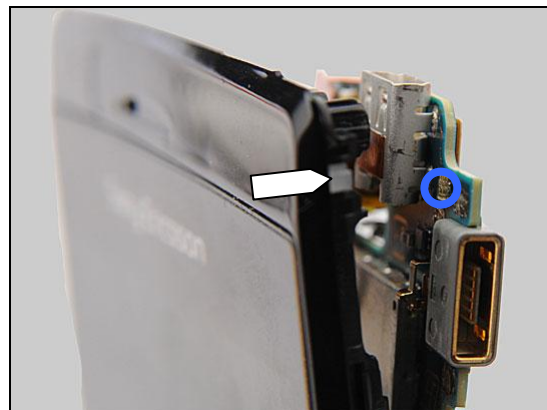
## Problem Areas: Illumination

### 1.5 LED/Illumination

#### 1.5.1 LED/Illumination

**Check:**

Inspect the window of LED red/green/blue on the Cover Front and LED red/green/blue on the Main PBA.



**Action:**

1. If dirty – clean it.
2. If the window is damaged – replace the Cover Front.
3. Send to higher level of repair.



#### 1.5.2 Key Illumination

**Check:**

Inspect the Illumination window on the Key Main.



**Action:**

1. If dirty – clean it.
2. If damaged – replace the Key Main.



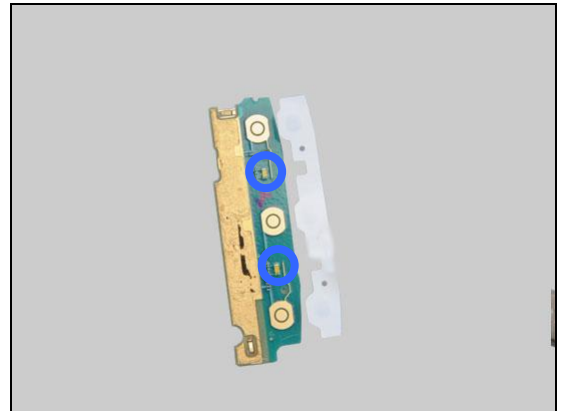




## Problem Areas: Illumination

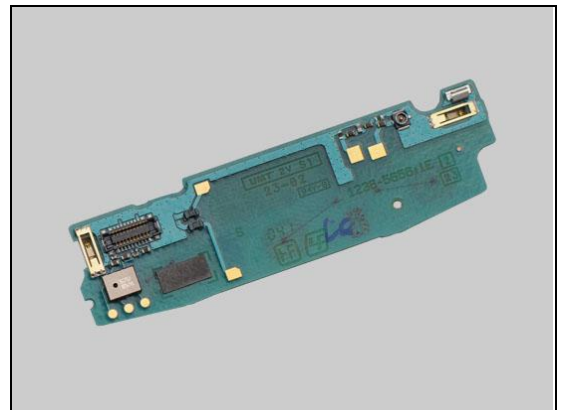
**Check:**

Inspect the LEDs on Sub PBA.



**Action:**

1. If dirty – clean them.
2. If the LEDs are damaged – replace the Sub PBA.



**Check:**

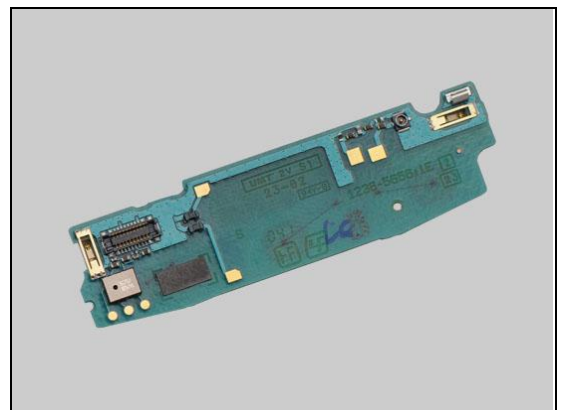
Inspect the BtB connector of the Sub PBA to the Key Flex PBA.

**Action:**

1. If not properly connected – disconnect and reconnect
2. If dirty or oxidized – clean both sides of the BtB connector.



3. If the connector is damaged – replace the Sub PBA.







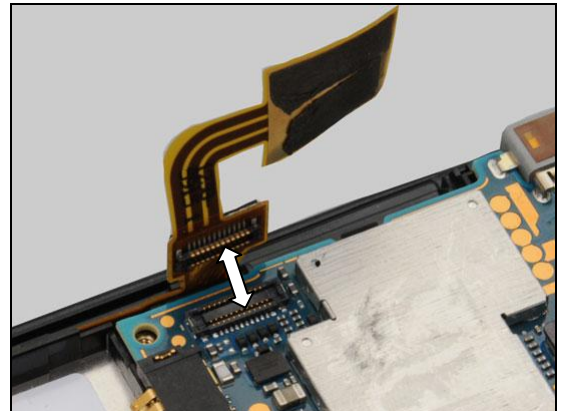
## Problem Areas: Illumination

**Check:**

Inspect the BtB connector of the Key Flex PBA to Main PBA.

**Action:**

1. If not properly connected – disconnect and reconnect
2. If dirty or oxidized – clean both sides of the BtB connector.

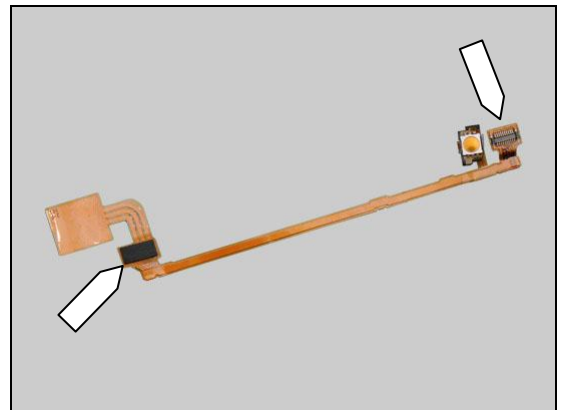


**Check:**

Inspect the Key Flex PBA.

**Action:**

1. If the Key Flex PBA or its BtB connector is damaged – replace the Key Flex PBA.
2. Send to higher level of repair.





## Problem Areas

### 1.6 Speaker

#### 1.6.1 Loudspeaker

**Check:**

Inspect the Loudspeaker's external port on the Cover Battery.

**Action:**

If clogged – clean the speaker port or replace the Cover Battery.



**Check:**

Inspect the Loudspeaker's mesh on the Ant Main Flex.

**Action:**

1. If clogged – clean the speaker mesh.



2. If the mesh is damaged – replace the Ant Main Flex.



**Check:**

Inspect the Loudspeaker's pins on the Ant Main Flex and the pads on the Sub PBA.

**Action:**

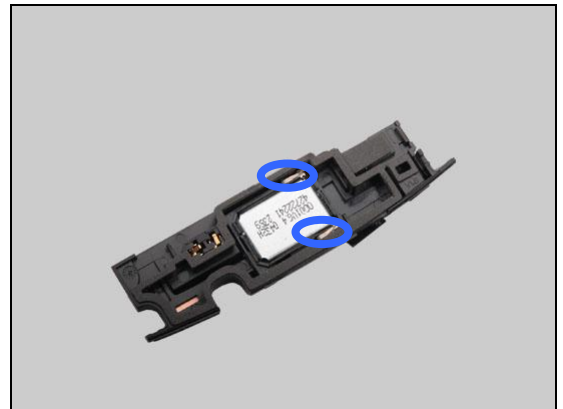
1. If dirty – clean them.



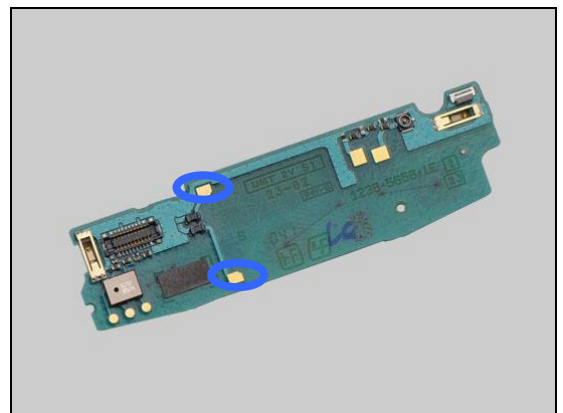


## Problem Areas: Speaker

2. If the pins on the Loudspeaker are damaged – replace the Ant Main Flex.



3. If the pads on the Sub PBA are damaged – replace the Sub PBA.



### Check:

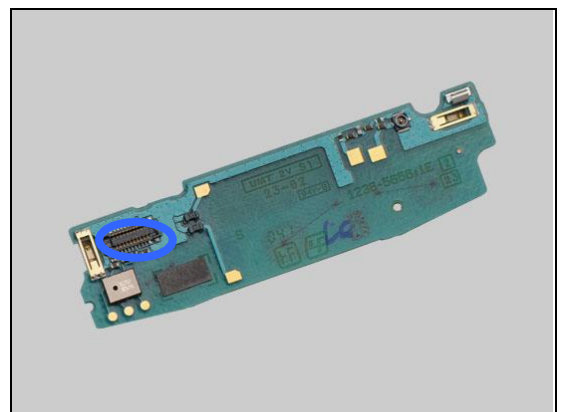
Inspect the BtB connector of the Sub PBA to Key Flex PBA.

### Action:

1. If not properly connected – disconnect and reconnect
2. If dirty or oxidized – clean both sides of the BtB connector.



3. If the connector is damaged – replace the Sub PBA.



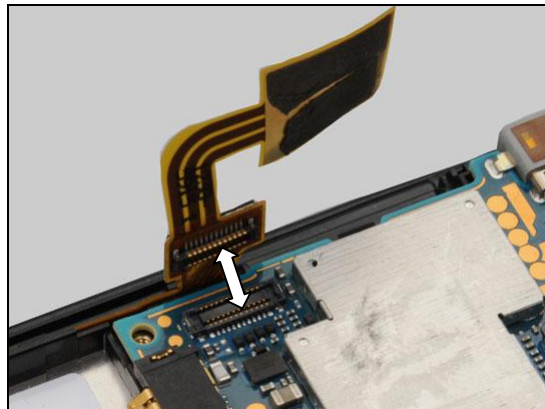
## Problem Areas: Speaker

### Check:

Inspect the BtB connector of the Key Flex PBA to Main PBA.

### Action:

1. If not properly connected – disconnect and reconnect.
2. If dirty or oxidized – clean both sides of the BtB connector.

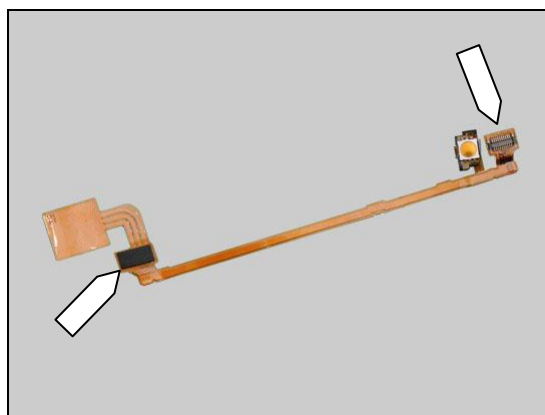


### Check:

Inspect the Key Flex PBA.

### Action:

1. If the Key Flex PBA or its BtB connector is damaged – replace the Key Flex PBA.
2. Send to higher level of repair.



## Problem Areas

### 1.7 Earphone

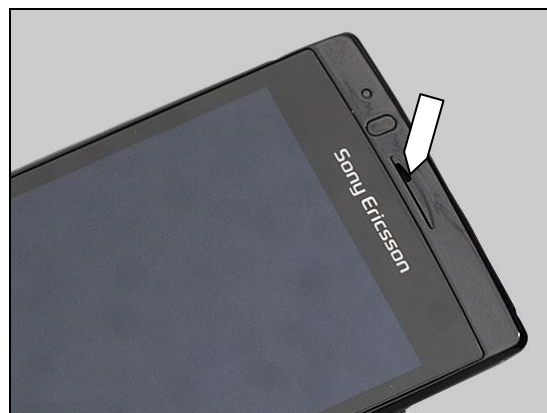
#### 1.7.1 Earphone

**Check:**

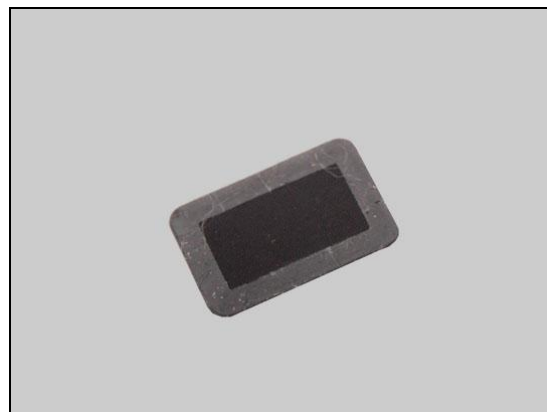
Inspect the Ear Speaker's external port.

**Action:**

1. If clogged – clean it.



2. If the Net Receiver is damaged – replace it.

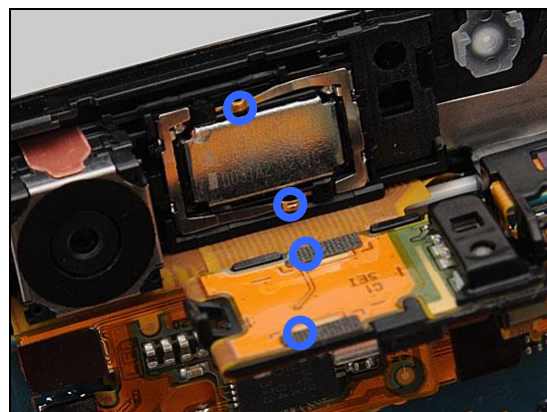


**Check:**

Inspect the Ear Speaker pins and the pads on the RCV Flex PBA.

**Action:**

If dirty – clean them.



**Check:**

Inspect the Ear Speaker.

**Action:**

If the Ear Speaker is damaged – replace the Ear Speaker.





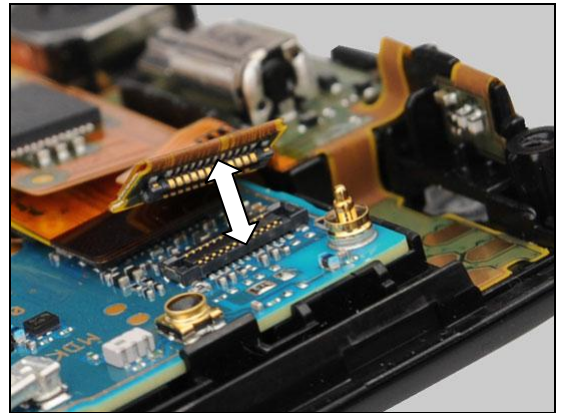
## Problem Areas: Earphone

**Check:**

Inspect the BtB connector of the RCV Flex PBA to the Main PBA.

**Action:**

1. If not properly connected – disconnect and reconnect.
2. If dirty or oxidized – clean both sides of the BtB connector.

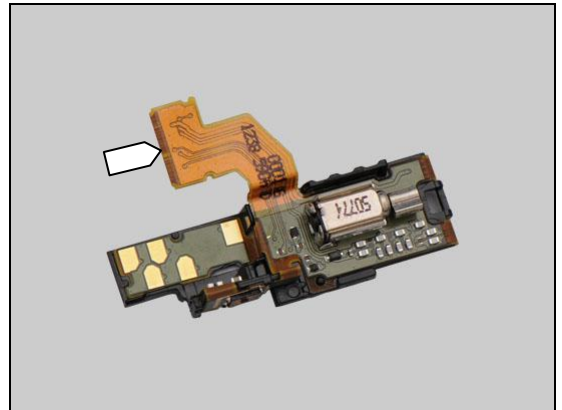


**Check:**

Inspect the RCV Flex PBA.

**Action:**

1. If the RCV Flex PBA or its ZIF connector is damaged – replace the RCV Flex PBA.
2. Send to higher level of repair.







## Problem Areas

### 1.8 Microphone

#### 1.8.1 Microphone

**Check:**

Inspect the Microphone's external port on the Cover Rear Sub Assembly.

**Action:**

1. If clogged – clean the port.



2. If (a) is damaged – replace the Cover Rear Sub Assembly.



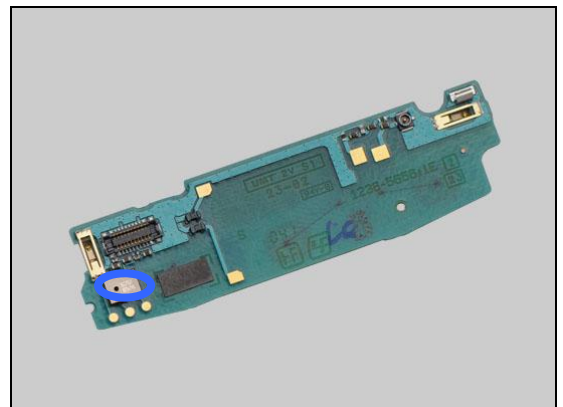
**Check:**

Inspect the Mic on the Sub PBA.



**Action:**

If the Mic is damaged – replace the Sub PBA.





## Problem Areas: Microphone

### Check:

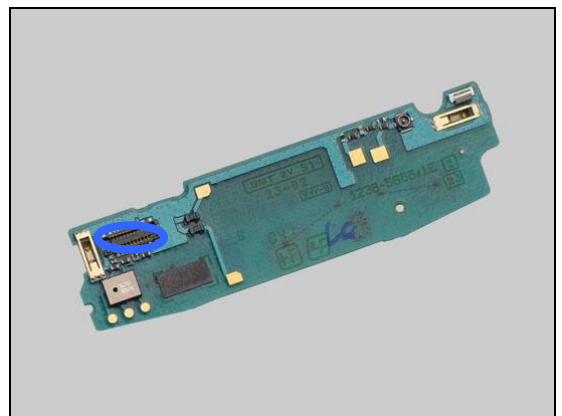
Inspect the BtB connector of the Sub PBA to Key Flex PBA.

### Action:

1. If not properly connected – disconnect and reconnect
2. If dirty or oxidized – clean both sides of the BtB connector.



3. If the connector on the Sub PBA is damaged – replace the Sub PBA.

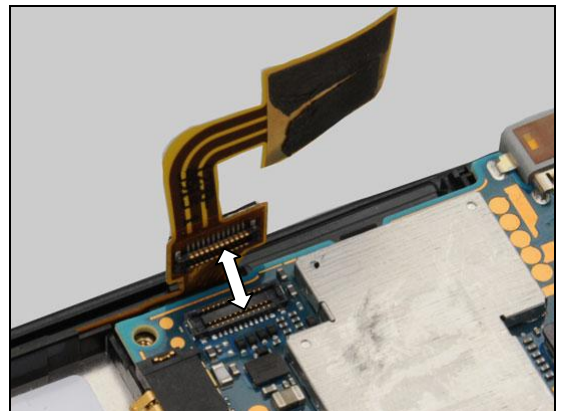


### Check:

Inspect the BtB connector of the Key Flex PBA to Main PBA.

### Action:

1. If not properly connected – disconnect and reconnect
2. If dirty or oxidized – clean both sides of the BtB connector.

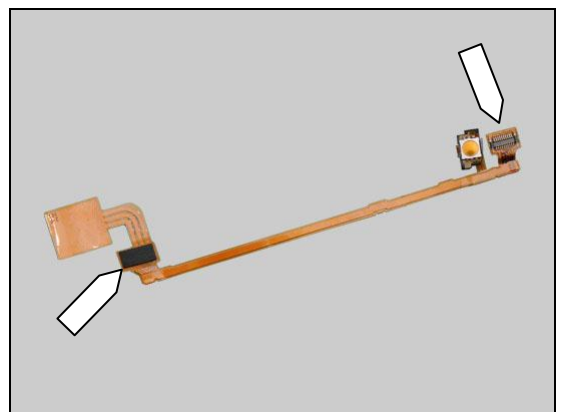


### Check:

Inspect the Key Flex PBA.

### Action:

1. If the Key Flex PBA or its BtB connector is damaged – replace the Key Flex PBA.
2. Send to higher level of repair.



## Problem Areas: Microphone

### 1.8.2 Secondary Microphone

**Check:**

Inspect the Microphone's external port on the Cover Battery.

**Action:**

1. If clogged – clean the port.



2. If (a) is damaged – replace Cover Battery.



**Check:**

Inspect the Microphone's mesh port on the Cover Rear Sub Assembly.

**Action:**

1. If clogged – clean the port.



2. If the Cover Rear Sub Assembly is damaged – replace the Cover Rear Sub Assembly.
3. Send to higher level of repair.





## Problem Areas

### 1.9 Vibrator

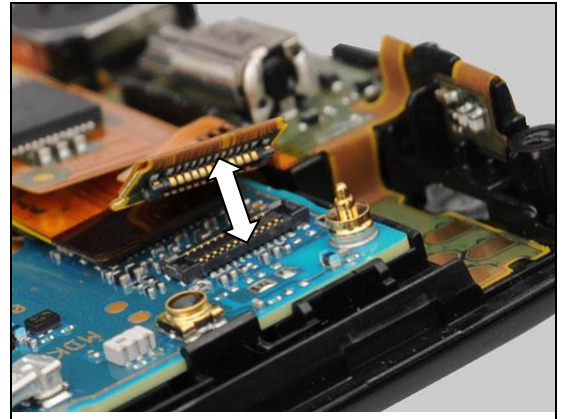
#### 1.9.1 Vibrator not generating alerts

**Check:**

Inspect the BtB connector of the RCV Flex PBA to the Main PBA.

**Action:**

1. If not properly connected – disconnect and reconnect.
2. If dirty or oxidized – clean both sides of the BtB connector.

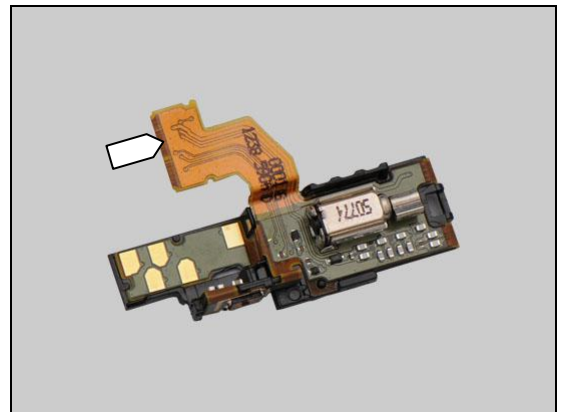


**Check:**

Inspect the RCV Flex PBA.

**Action:**

1. If the RCV Flex PBA or its ZIF connector is damaged – replace the RCV Flex PBA.
2. Send to higher level of repair.



## Problem Areas

### 1.10 Camera

#### 1.10.1 Camera defects

**Check:**

Inspect the Camera Window on the Cover Rear Sub Assembly.

**Action:**

1. If dirty – clean the window.

2. If scratched or damaged – replace the Cover Rear Sub Assembly.

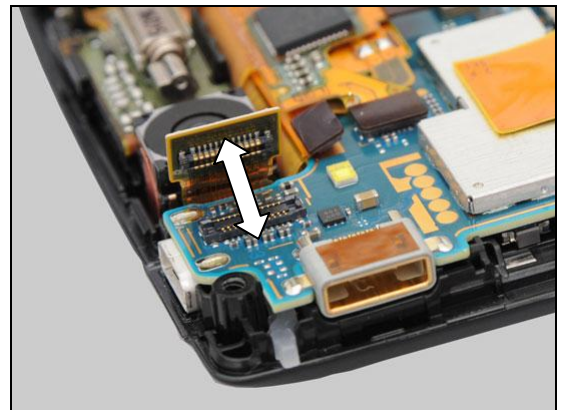


**Check:**

Inspect the BtB connector of the Camera 8.1 MPixel CMOS Module to the PBA.

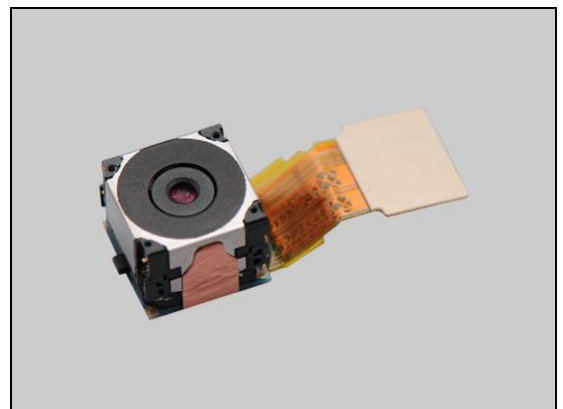
**Action:**

1. If not properly connected – disconnect and reconnect  
2. If dirty or oxidized – clean both sides of the BtB connector.



**Action:**

1. If damaged – replace the Camera 8.1 MPixel CMOS Module.  
2. Send to higher level of repair.





## Problem Areas

### 1.11 Flash LED

#### 1.11.1 Flash LED not flashing

**Check:**

Inspect Flash Lens Window on Cover Rear Sub Assembly.

**Action:**

1. If scratched or damaged – replace the Cover Rear Sub Assembly.

2. Send to higher level of repair.







## Problem Areas

### 1.12 Bluetooth and WLAN

#### 1.12.1 Bluetooth or WLAN connection failure

**Check:**

Inspect the WLAN and Bluetooth antenna on the Cover Rear Sub Assembly.



**Check:**

Inspect the WLAN and Bluetooth antenna contact pads on the Ant GPS Flex and the contact pins on the Main PBA.

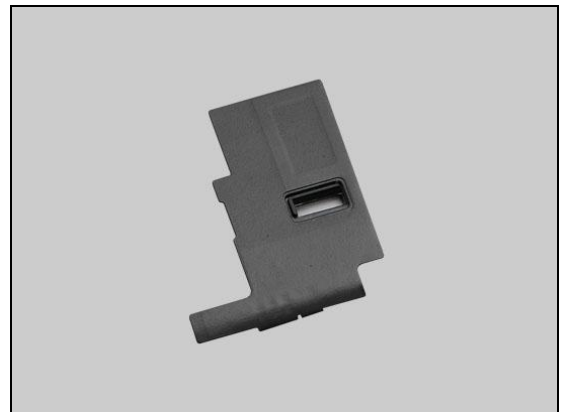
**Action:**

1. If dirty or oxidized – clean the pads and pins.



2. If the pads are damaged – replace the Ant GPS Flex.

3. Send to higher level of repair.



## Problem Areas

### 1.13 GPS

#### 1.13.1 GPS malfunctions

**Check:**

Inspect the GPS antenna on the Cover Rear Sub Assembly.



**Check:**

Inspect the GPS antenna contact pads on Ant GPS Flex and the contact pins on the Main PBA.

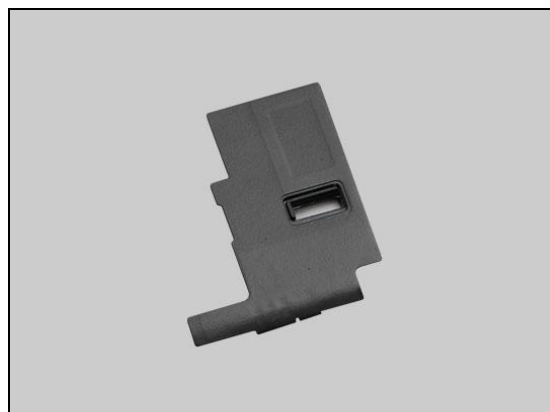
**Action:**

1. If dirty or oxidized – clean the pads and pins.



2. If the pads are damaged – replace the Ant GPS Flex.

3. Send to higher level of repair.





## **Problem Areas**

### **1.14 Compass**

#### **1.14.1 Compass fails**

**Action:**

Send to higher level of repair.



## **Problem Areas**

### **1.15 Accelerometer**

#### **1.15.1 Accelerometer test fails**

**Action:**

Send to higher level of repair.

## Problem Areas

### 1.16 Ambient Light Sensor

#### 1.16.1 Light Sensor malfunctions

**Check:**

Inspect the Light Sensor window on the Cover Front.

**Action:**

1. If clogged – clean it.

2. If scratched or damaged – replace the Cover Front.

**Check:**

Inspect the Light Sensor on the RCV Flex PBA.

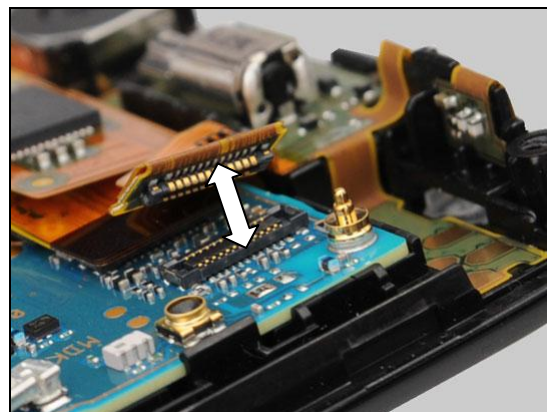
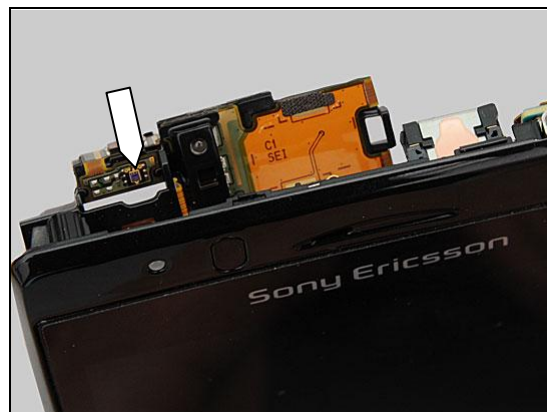
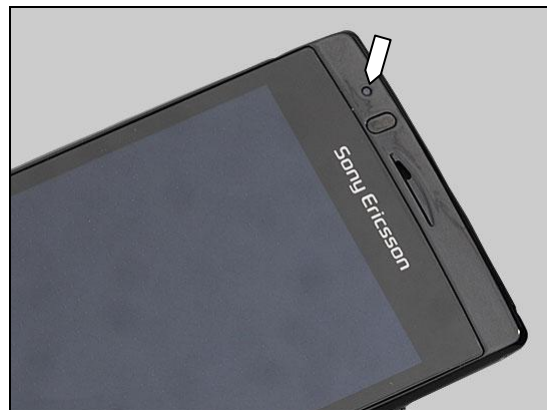
**Check:**

Inspect the BtB connector of the RCV Flex PBA to the Main PBA.

**Action:**

1. If not properly connected – disconnect and reconnect.

2. If dirty or oxidized – clean both side of the BtB connector.



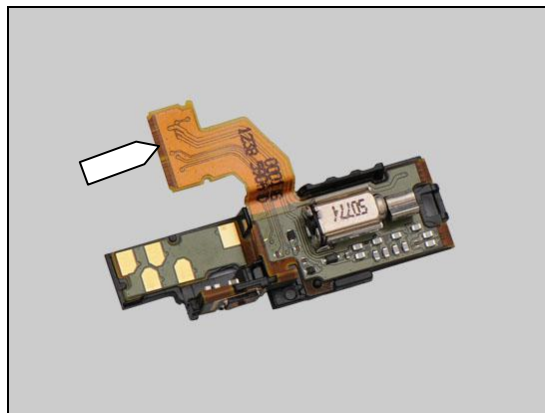
## Problem Areas: Sensors

**Check:**

Inspect the RCV Flex PBA.

**Action:**

1. If the RCV Flex PBA or its ZIF connector is damaged – replace the RCV Flex PBA.
2. Send to higher level of repair.







## Problem Areas

### 1.17 Proximity switch

#### 1.17.1 Proximity switch malfunctions

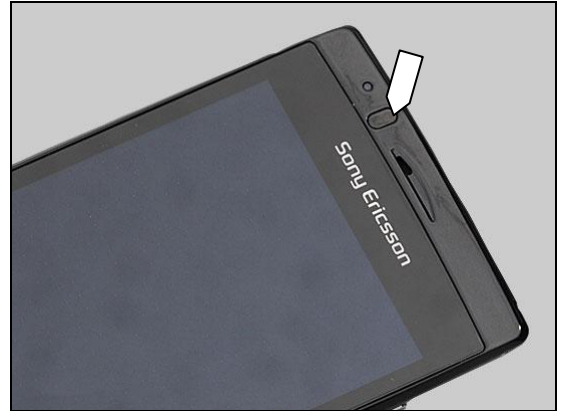
**Check:**

Inspect the Proximity switch window on the Cover Front.

**Action:**

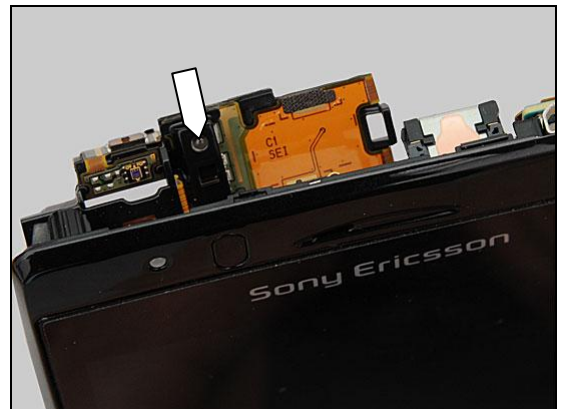
1. If clogged – clean it.

2. If scratched or damaged – replace the Cover Front.



**Check:**

Inspect the Proximity switch on the RCV Flex PBA.

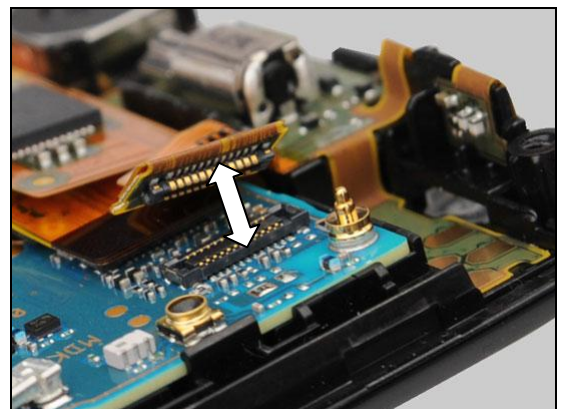


**Check:**

Inspect the BtB connector of the RCV Flex PBA to the Main PBA.

**Action:**

1. If not properly connected – disconnect and reconnect.
2. If dirty or oxidized – clean both sides of the BtB connector.



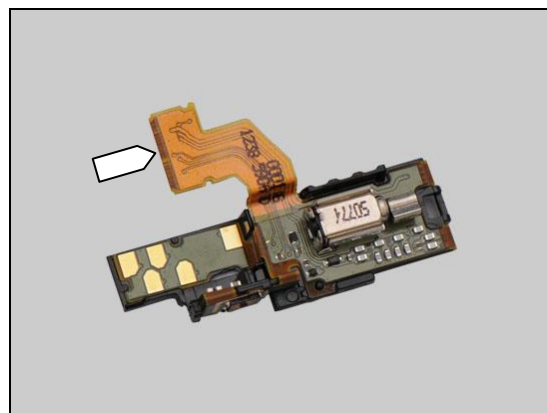
## Problem Areas

**Check:**

Inspect the RCV Flex PBA.

**Action:**

1. If the RCV Flex PBA or its ZIF connector is damaged – replace the RCV Flex PBA.
2. Send to higher level of repair.





## **Problem Areas**

### **1.18 Real Time Clock**

#### **1.18.1 Real Time Clock test fails**

**Action:**

Send to higher level of repair.

## **Problem Areas**

### **1.19 Total call time**

#### **1.19.1 Total call time fails**

**Action:**

Send to higher level of repair.

## Problem Areas

### 1.20 External Memory Card

#### 1.20.1 Memory Card not detected

**Check:**

Inspect the memory card holder on the Cover Rear Sub Assembly.

**Action:**

If damaged – replace the Cover Rear Sub Assembly.



**Check:**

Inspect the Memory Card holder.

**Action:**

1. If dirty or oxidized – clean the holder.
2. Send to higher level of repair.





## **Problem Areas**

### **1.21 Security**

#### **1.21.1 Security fails**

**Action:**

Send to higher level of repair.





## Problem Areas

### 1.22 FM Radio

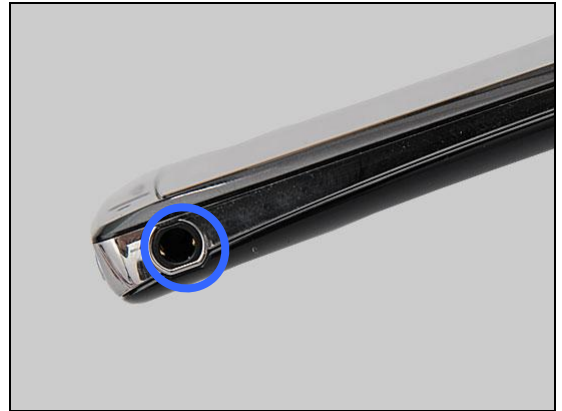
#### 1.22.1 No/Poor FM Radio reception

**Check:**

Inspect the audio jack.

**Action:**

If dirty or oxidized – clean the connector.



**Check:**

Inspect the contact pins on the audio jack and the contact pads on the RCV Flex PBA.

**Action:**

1. If dirty or oxidized – clean the pads and pins.



2. If the pins are damaged – replace the Audio Jack Receptacle 5p.

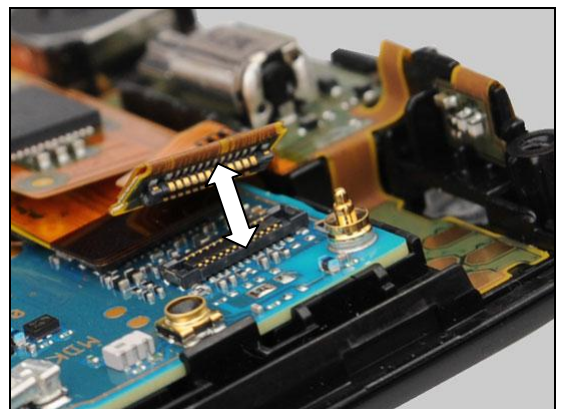


**Check:**

Inspect the BtB connector of the RCV Flex PBA to the Main PBA.

**Action:**

1. If not properly connected – disconnect and reconnect.  
2. If dirty or oxidized – clean both sides of the BtB connector.



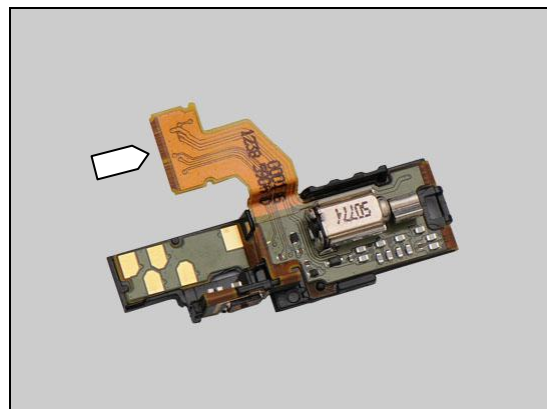
## Problem Areas: FM Radio

**Check:**

Inspect the RCV Flex PBA.

**Action:**

1. If the RCV Flex PBA or its ZIF connector is damaged – replace the RCV Flex PBA.
2. Send to higher level of repair.



## **Problem Areas**

### **1.23 Battery test**

#### **1.23.1 Battery test fails**

**Action:**

Send to higher level of repair.



## **Problem Areas**

### **1.24 Verify Certificates**

#### **1.24.1 Verify certificates fails**

**Action:**

Send to higher level of repair.

## Problem Areas

### 1.25 HDMI Test

#### 1.25.1 HDMI test fails

**Check:**

Inspect the HDMI connector.

**Action:**

Send to higher level of repair.





## Problem Areas

### 1.26 Network & Signal

#### 1.26.1 No/Poor signal

**Check:**

Inspect the Main Antenna on the Ant Main Flex.



**Check:**

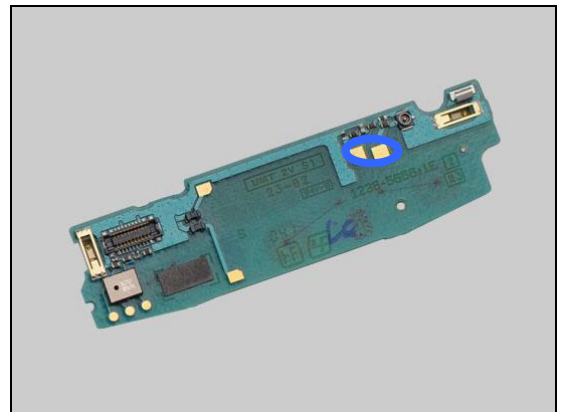
Inspect the Main Antenna contact pins on the Ant Main Flex and contact pads on the Sub PBA.

**Action:**

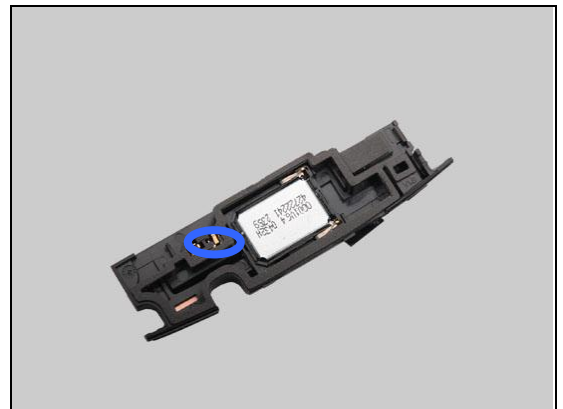
1. If dirty or oxidized – clean the pads and pins.



2. If the pads on the Sub PBA are damaged – replace the Sub PBA.



3. If the pins are damaged – replace Ant Main Flex.







## Problem Areas: Network & Signal

### Check:

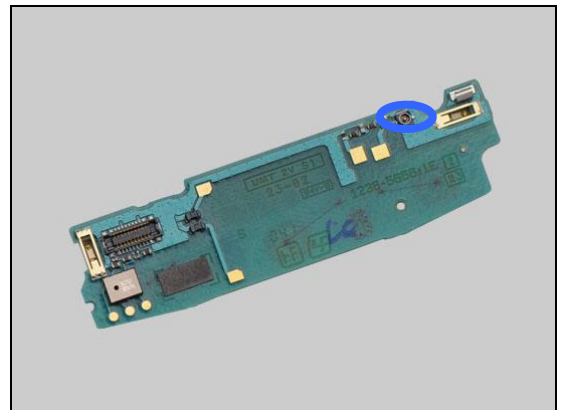
Inspect the connector on Sub PBA to RF Cable.

### Action:

1. If not properly connected to the Antenna – disconnect and reconnect it.



2. If damaged – replace the Sub PBA.

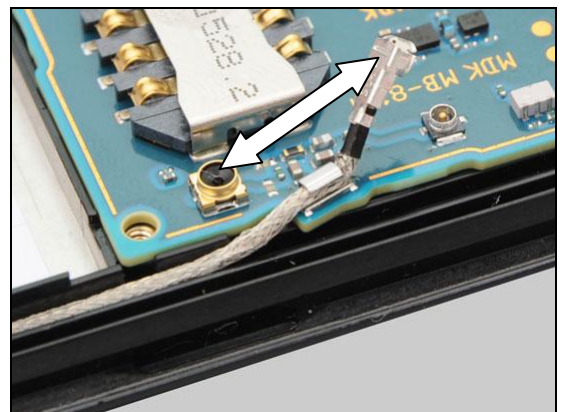


### Check:

Inspect the connector RF Cable to the Main PBA.

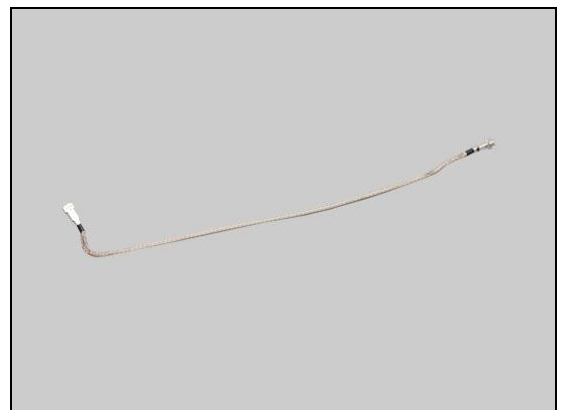
### Action:

1. If not properly connected to the Main PBA – disconnect and reconnect it.



2. If damaged – replace the RF Cable.

3. Send to higher level of repair.



## Problem Areas

### 1.27 SIM

#### 1.27.1 SIM not detected

Check the SIM holder.

**Check:**

Inspect the SIM holder.

**Action:**

1. If dirty or oxidized – clean the holder.
2. Send to higher level of repair.



#### 1.27.2 Incorrect SIM indicated

**Check:**

Check whether the phone is locked to a particular operator and whether the correct operator SIM is being used.

**Action:**

1. Use a proper operator SIM or test SIM.
2. Send to higher level of repair.



## Problem Areas

### 1.28 Charging

#### 1.28.1 Battery will not charge

**Check:**

Inspect the contact pads of the Battery.

**Action:**

1. If dirty or oxidized – clean the pads.
2. If damaged – replace the Battery.



**Check:**

Inspect the Battery Contact pins.

**Action:**

1. If dirty or oxidized – clean the contact pins.
2. If adhesive is detected on the contact pins – use an eraser to gently rub off the adhesive.



**Check:**

Inspect the USB connector.

**Action:**

1. If dirty or oxidized – clean the connector.
2. Send to higher level of repair.





## Problem Areas

### 1.29 HandsFree by Wire

#### 1.29.1 Connection to Portable HandsFree fails

**Check:**

Inspect the audio jack.

**Action:**

If dirty or oxidized – clean the connector.



**Check:**

Inspect the contact pins on the audio jack and the contact pads on the RCV Flex PBA.

**Action:**

1. If dirty or oxidized – clean the pads and pins.



2. If the pins are damaged – replace the Audio Jack Receptacle 5p.

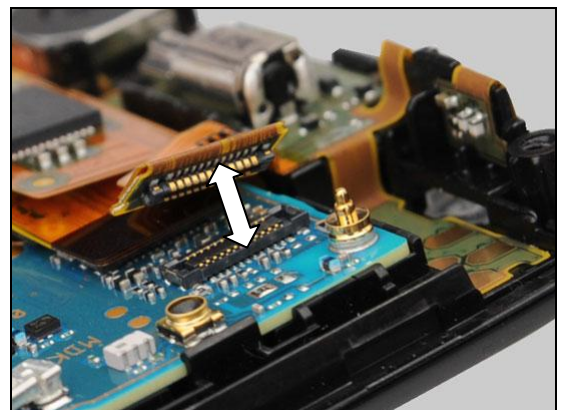


**Check:**

Inspect the BtB connector of the RCV Flex PBA to the Main PBA.

**Action:**

1. If not properly connected – disconnect and reconnect.  
2. If dirty or oxidized – clean both sides of the BtB connector.



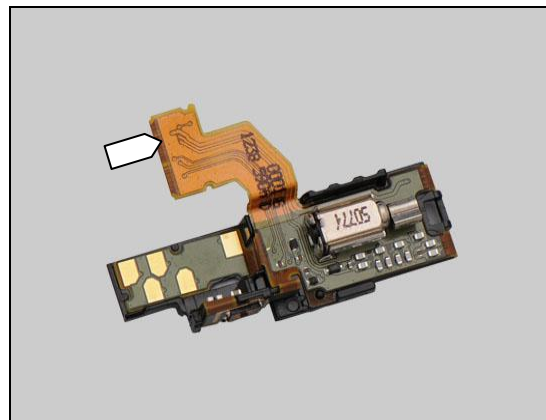
## Problem Areas: HandsFree By Wire

**Check:**

Inspect the RCV Flex PBA.

**Action:**

1. If the RCV Flex PBA or its ZIF connector is damaged – replace the RCV Flex PBA.
2. Send to higher level of repair.



## Problem Areas

### 1.30 Data Communication

#### 1.30.1 Data transfer via System Connector fails

**Check:**

Inspect the USB connector.

**Action:**

1. If dirty or oxidized – clean the connector.
2. Send to higher level of repair.







## 2 Revision History

Rev.	Date	Changes / Comments
1	2011-08-03	Initial release
2	2012-10-05	Main Display V-Sync calibration added to 1.3 and 1.4